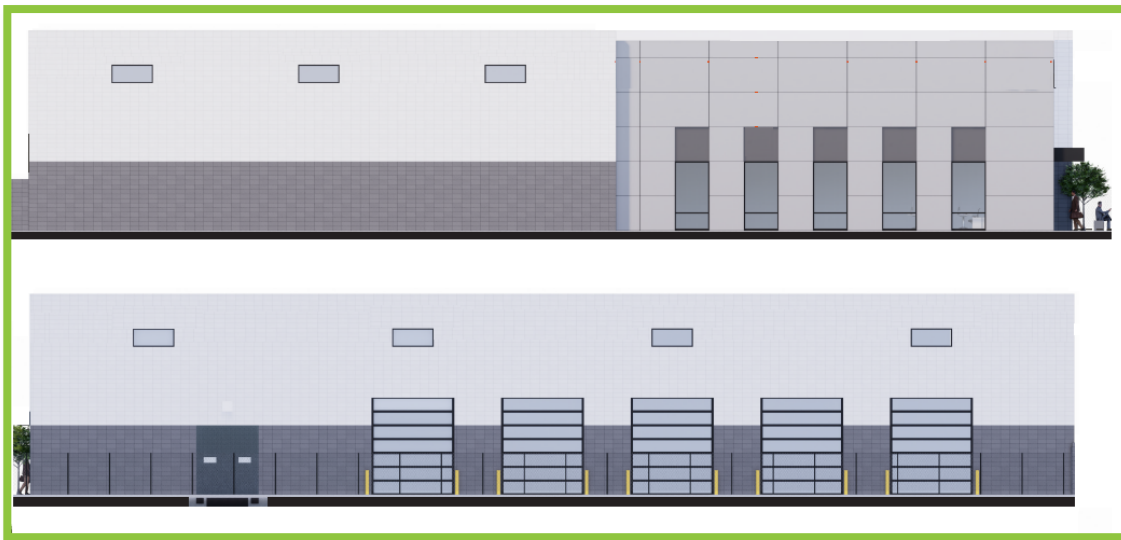


## Entre Completes Sale of 3.14 Acre Site for Trucking Build-to-Suit in Aurora, IL

**Aurora, IL (October, 2023)** - Entre Commercial Realty is pleased to announce that it has recently completed the sale of a 3.14 acre development site located at 1995 Melissa Lane in Aurora, Illinois. Entre obtained a variance and approval for outside storage and fleet maintenance. The site is located along I-88, allowing for maximum interstate exposure, with close proximity to multiple interchanges. Entre was able to procure the buyer who plans to develop their future HQ for transportation, maintenance, and parking needs. Mike DeSerto and Cory Kay from Entre Commercial Realty represented the Seller in this transaction. The Purchaser was represented by Enterprise Realty.



### **About Entre Commercial Realty LLC**

Entre Commercial Realty LLC is a full-service commercial real estate firm based in suburban Chicago, IL. Entre provides a wide range of real estate services including brokerage, property management, and construction throughout the Midwest and nationally through its affiliates.

For more information visit [www.entrecommercial.com](http://www.entrecommercial.com)